



POWERED FOR PIVOTING:

OUR GROWTH STORY

CENTER FOR INNOVATIVE TRAINING OF YOUTH
ANNUAL REPORT **2021**

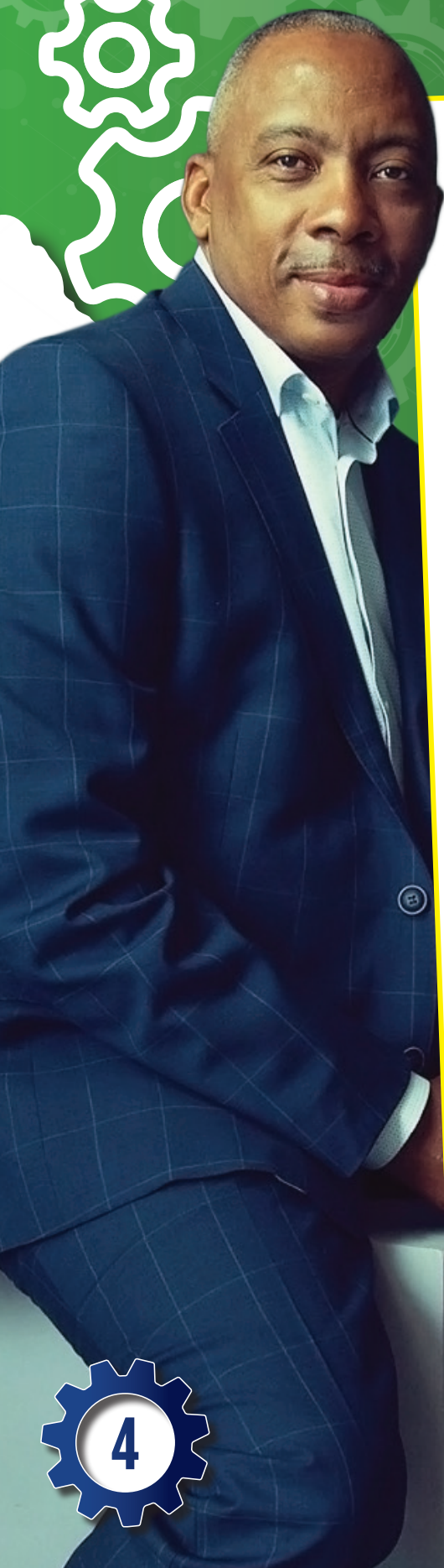




TABLE OF CONTENTS

• 2021 Reflections.....	4
• Our Founding Story.....	5
• Board of Directors.....	6
• Senior Executives, Executives & Directors.....	7
• Impact Overview.....	8
• STEM NOLA Expands Reach.....	9
• STEM MARKETS.....	10-11
- STEM NOLA	- Saginaw STEM
- DOD STEM Central LA	- STEM Baton Rouge
- DOD STEM Gulf Coast	- STEM Grambling
- DOD STEM NOLA	- STEM Illinois
- DOD STEM Shreveport-Bossier	- STEM ST. John
- Northside STEM	- STEM St. Tammany
• STEM Education District.....	12-13
• Financial Statement.....	14-15
• Sponsors & STEM NOLA supporters.....	16-17
• Professional Volunteers & Interns.....	18-19
• GET IN TOUCH	

2021 Reflections



How do we maintain hope and build momentum amidst a world that has drastically changed us?

We all have felt the compounded challenges that 2021 brought. We have faced and navigated the disruption and uncertainty of an ongoing global pandemic personally, in our communities, throughout the country and across the world.

Year two of the pandemic significantly impacted K-12 student learning, leaving students behind by an average of five months in mathematics and four months in reading at the end of the school year (ref). The pandemic has widened preexisting opportunity and achievement gaps, hitting our historically disadvantaged students hardest, and its fallout threatens to depress this generation's prospects and constrict their opportunities far into adulthood.

It is in these times, however, where we hold strong to our guiding purpose: the strength, power, and wonder of Science, Technology, Engineering and Math (STEM). This is why STEM NOLA exists and these disparities are what we stand to combat.

From our beginnings in a neighborhood garage turned classroom-laboratory to our schools and Zoom screens today, we have seen how a community-centered model that provides inspiration, engagement, and exposure in STEM can and will transform minds and lives.

In response to the pandemic, STEM NOLA adjusted and expanded our digital offerings so interactive learning could both continue in New Orleans and expand to cities across the region and country. We were able to hire the necessary staff to triple the size of our organization, allowing us to quadruple our reach and grow our revenue by 100%. Through STEM Global Action, we engaged 23,245 K-12 students representing 2,786 total schools, and 72% of these students receive free or reduced lunch. Our network grew to include 1,960 interns, 526 professional mentors who provided 8,053 hours of guidance and support, and 634 military families.

In the difficult moments, we found pride and hope seeing the growing investment in and momentum surrounding STEM across the country. STEM will triumph over the circumstances, just as it defines and governs our universe.

As we commence our tenth year in operation, we remain steadfast. We are committed to a bold vision for the future that pursues the advancement of STEM education for children, parents and communities everywhere. STEM Global Action is a resource for each individual, organization, government agency, and entity seeking to expand STEM education, especially in communities that have been historically and intentionally under-resourced. STEM Global Action is accessible, approachable, for our children and for us all.

Now more than ever, it is imperative that we elevate awareness of and amplify STEM's boundless benefits. We believe in STEM as a pillar in transforming individual lives and shaping America to be the just and equal society we know it should be.

This is what we're fighting for. Come with us.

Calvin Mackie
CEO & Founder, STEM NOLA & STEM Global Action

Our Founding Story

Founded by New Orleans native, and former tenured Tulane University Engineering professor, Dr. Calvin Mackie, STEM NOLA, a 501c3 organization, is committed to exposing, inspiring and engaging members of the community into the world of STEM – Science, Technology, Engineering and Mathematics (STEM).

We design and deliver learning opportunities, activities, programs & events to all STEM stakeholders, with an emphasis on under-served communities, across the city. STEM NOLA participants will be inspired. They will be motivated. They will benefit from the necessary training groundwork in an effort to adopt 21st Century skills of Communication, Collaboration and Critical Thinking.

STEM NOLA realizes that effective community-based STEM program must be inclusive yet focused enough to reach the people where they are, on their level, in order to take them to where they need to be to compete and succeed in life.

Our Mission & Vision

To grow, engage, expose and inspire future Innovators, Creators, Makers and Entrepreneurs. Members of the community will learn about opportunities in the fields of Science, Technology, Engineering and Math (STEM).

Core Goals

- ⚙️ To help youth develop an interest in STEM and STEM-based learning activities
- ⚙️ To develop the capacities of youth to engage in STEM-based activities for learning and recreation.
- ⚙️ To inspire youth to value the opportunities and possibilities of STEM-based careers
- ⚙️ To help youth develop the necessary, and transferable 21st Century skills of Communication, Collaboration and Critical Thinking.



Board of Directors



JIMMIE L. DAVIS, JR., PHD
The MITRE Corporation

Past President, STEMFlorida, Inc.
Tallahassee, FL



REUBEN A. BELL
Senior Director

Global eCommerce & Advanced Customer Collaboration,
Consumer Supply Chain Johnson & Johnson, Inc.
Skillman, NJ



KENNETH GRIMES
Principal

Senior Investment Strategist
Bessemer Trust
San Jose, CA



TROY CLARK
Board President

President and CEO,
Golden Leaf Energy - Gretna, LA



ERIC GRIGGS, M.D
Community Health Advocate

Director of Community Medicine
Access Health Louisiana
New Orleans, LA



LONA E. HANKINS
**Deputy Chief Executive Officer of
Infrastructure and Planning**

New Orleans Regional Transit Authority
New Orleans, LA



CHERYL G. EVANS, J.D.
Attorney at Law

Private Practice
New Orleans, LA

Senior Executive Team & Directors

SENIOR EXECUTIVE



DR. CALVIN MACKIE
Founder & CEO

EXECUTIVE TEAM



TRACY MACKIE
Client Support Manager



LAWRENCE JACKSON
Special Assistant to the CEO



DAVID WADE
Interim Chief Operating Officer



JAVONNE PAUL
Grants Manager

DIRECTORS



DANA ALLEN
Programs



SHANTELL BOLDEN
Special Projects



CASEY MCGEE
Communications



LEIGH LENOR
Education



GLYNN FREEMAN
Operations

STEM GLOBAL ACTION IMPACT OVERVIEW

18
Major
Cities

7
States
(IN-PERSON)

47
States
(VIRTUALLY)

2
Countries

23,245
Total Attendees



2786
K-12 Schools
Represented

6,135
K-2 Children

8,277
3-5th Graders

7,420
6-8th Graders

1,412
9-12th Graders



12,431
Boys in
Attendance



8,053
Total Mentor
Impact Hours



10,814
Girls in
Attendance

526
Professionals

1,960
College Interns

Majority Students with Free/Reduced Lunch

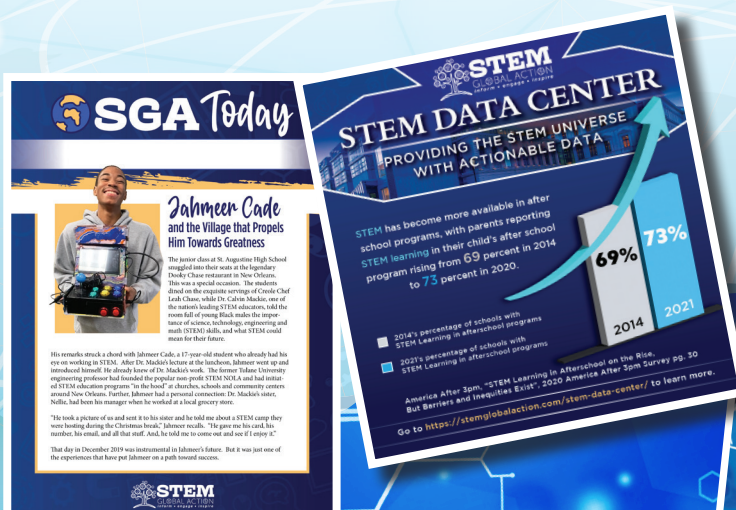


STEM NOLA EXPANDS REACH WITH CREATION OF STEM GLOBAL ACTION

In 2021, we launched STEM Global Action (SGA), a network of affiliates that pursue the advancement of STEM education for children, parents and communities. SGA prioritizes raising awareness of the benefits of STEM education and providing STEM learning opportunities to K-12 students from low-income backgrounds and in communities of color. We address societal inequities by creating pathways to quality jobs and careers.

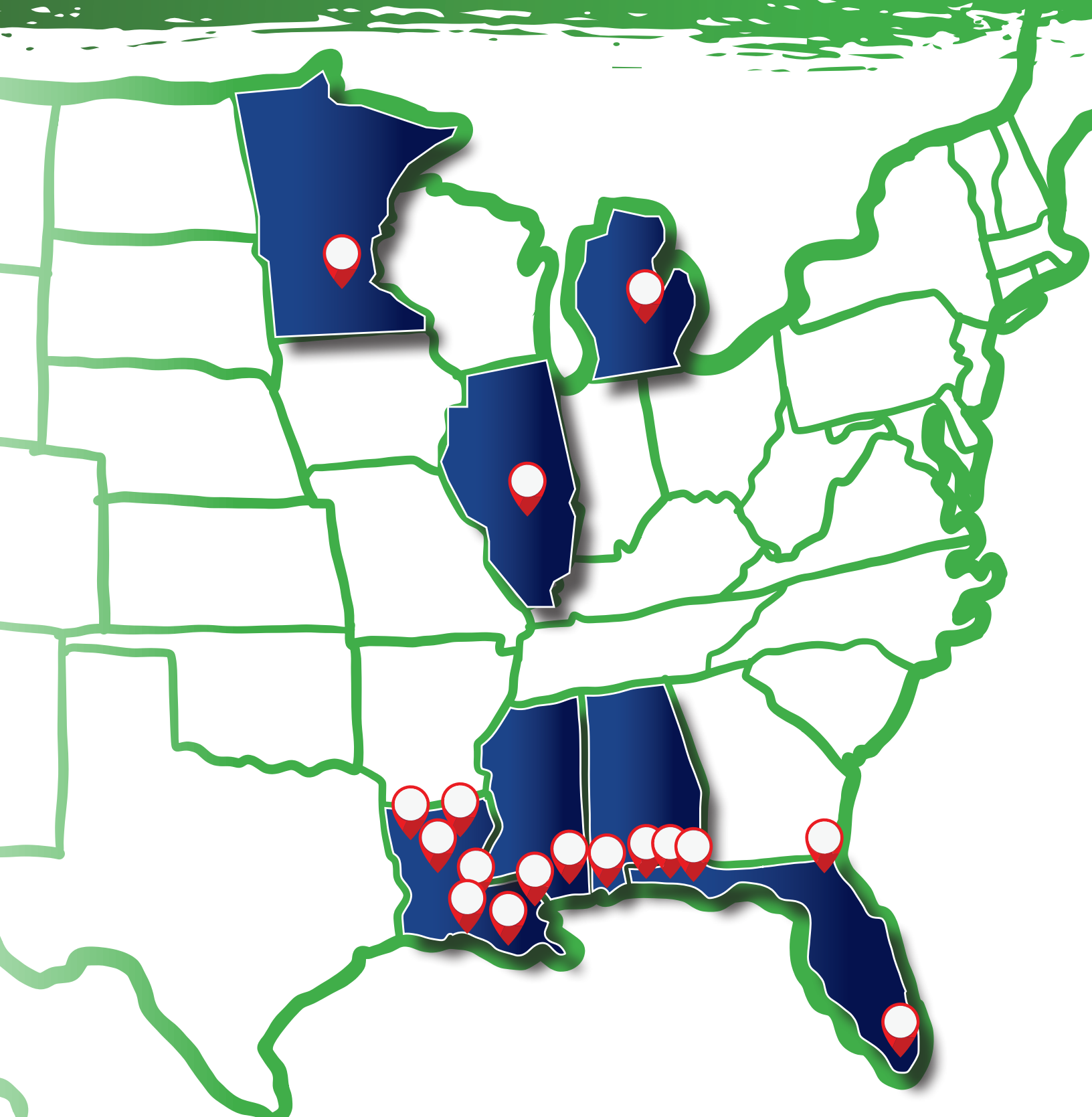
The SGA website is an activity hub and resource for each individual, organization, government agency and STEM enthusiast seeking to expand STEM education. The network provides a place for people to turn to learn more about the benefits of STEM, how the accompanying skills can change one's life, and the ways they extend beyond to effect the lives of those in the community.

- ⚙️ **The Let's Talk STEM with Dr. Calvin Mackie podcast** series features interviews with STEM entrepreneurs, educators, corporate leaders and students who talk about the importance of STEM in their lives today.
- ⚙️ **STEM Global Action Today** is a newsletter with comprehensive articles on the most important issues related to STEM and features inspiring stories of current and future STEM leaders.
- ⚙️ **STEM Global Action Data Center** is a one-stop resource library for studies, reports, video presentations and news coverage about STEM.





STEM MARKETS



18

Participating
Cities

7

Participating
States

2

Participating
Countries

AFRICA

TANZANIA

ALABAMA

- MOBILE

FLORIDA

- PENSACOLA
- MIAMI
- DESTIN
- FT. WALTON
- JACKSONVILLE

ILLINOIS

- URBANA-CHAMPAIGN

LOUISIANA

- NEW ORLEANS
- ST. TAMMANY
- ST. JOHN THE BAPTIST
- BATON ROUGE
- ALEXANDRIA
- GRAMBLING
- SHREVEPORT

MINNESOTA

- Minneapolis

MICHIGAN

- SAGINAW

MISSISSIPPI

- GULF PORT
- BILOXI

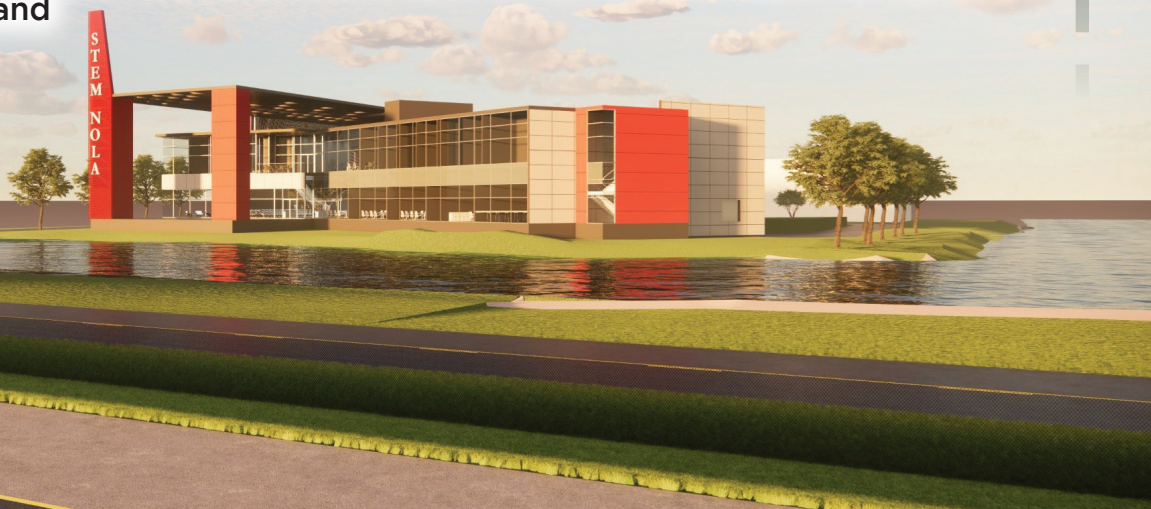
STEM NOLA EMBARKS ON CREATING HISTORIC STEM EDUCATION DISTRICT

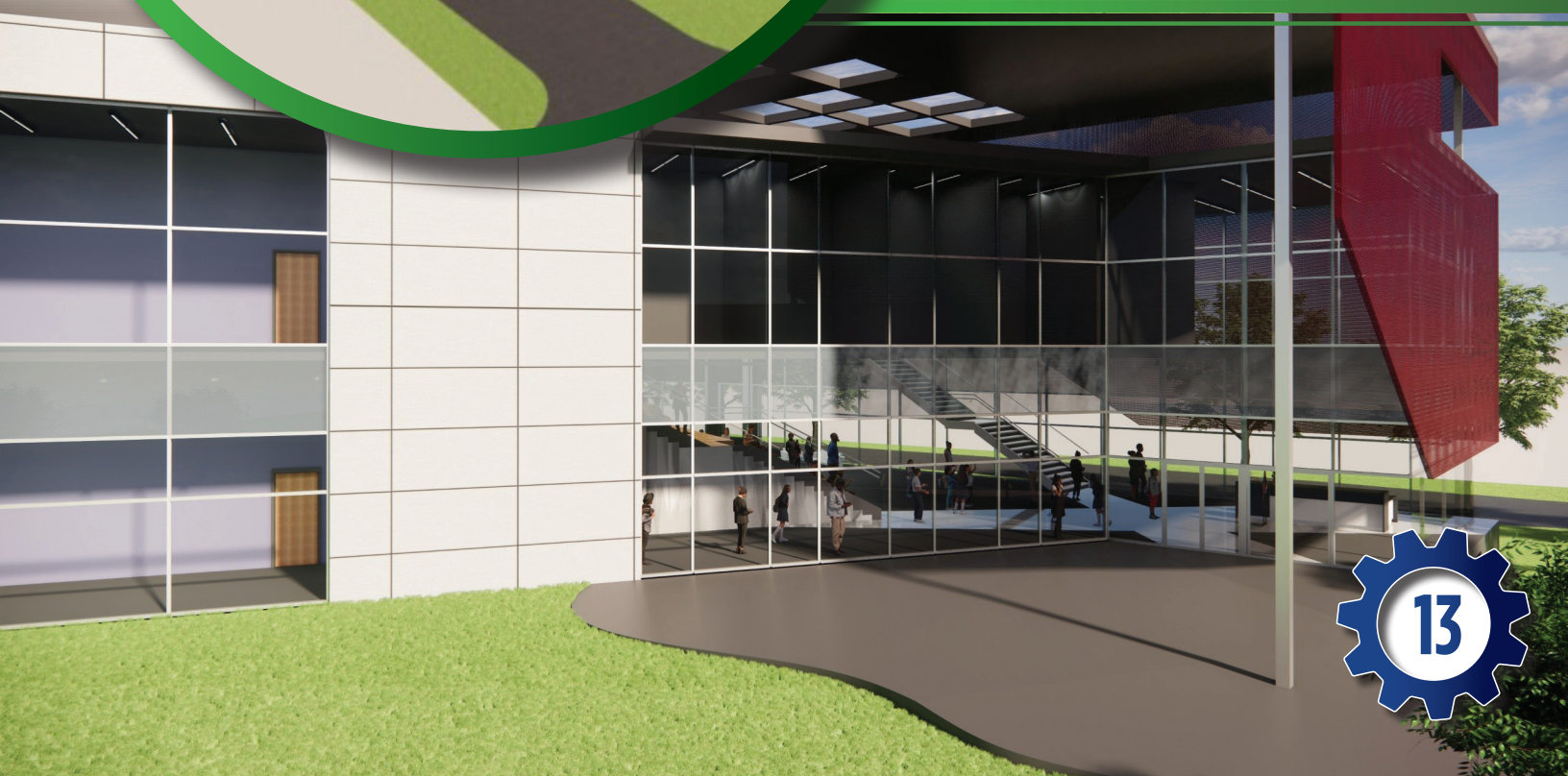
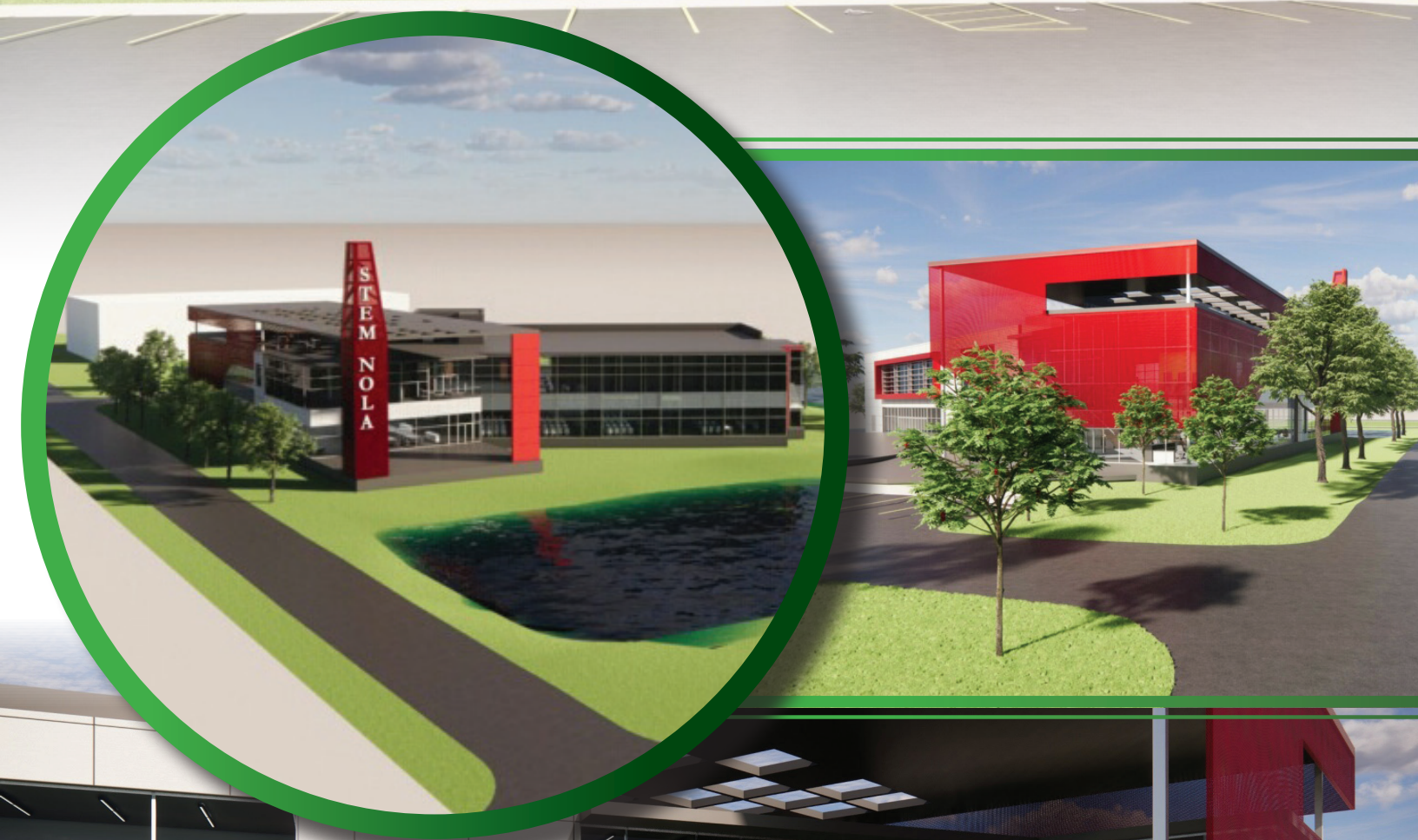
STEM NOLA is presently building the STEM Innovation Center, a new 42,000 square-foot headquarters and innovation center in New Orleans East. The Innovation Center will allow STEM NOLA to reach even more students and make New Orleans a national leader in innovation, workforce and entrepreneurship. We expect the STEM Innovation Center to reach 33,000+ community members in its inaugural year.

We anticipate the following regional socioeconomic and environmental impacts:

- Prepare hundreds of high school and college students annually for success in STEM careers each year for decades to come, fueling the growth of high-wage high-growth STEM industries in the region.
- Provide high-quality free STEM educational programming for more than 10,000 students from low-income backgrounds from Southeast Louisiana in pre-kindergarten through high school each year.
- Support the growth and sustainability of the region's STEM ecosystem- This project will advance the growth and sustainability of STEM NOLA and other regional STEM-focused nonprofit organizations and programs that partner with STEM NOLA and use the new Innovation Hub.
- Divert hundreds of thousands of gallons of stormwater from the City of New Orleans' over-taxed drainage systems while creating a model project that uses environmental design principles and stormwater management practices that also educate program participants on stormwater management issues.

In line with our vision, reaching and impacting more young people is at the heart of our plan forward. While we recently grew to an annual reach of 17,000 students in our virtual, in-person, and self-directed experiences, we envision more. By 2024, we expect to engage 100,000 students annually in our programming, ramping up each year as we expand

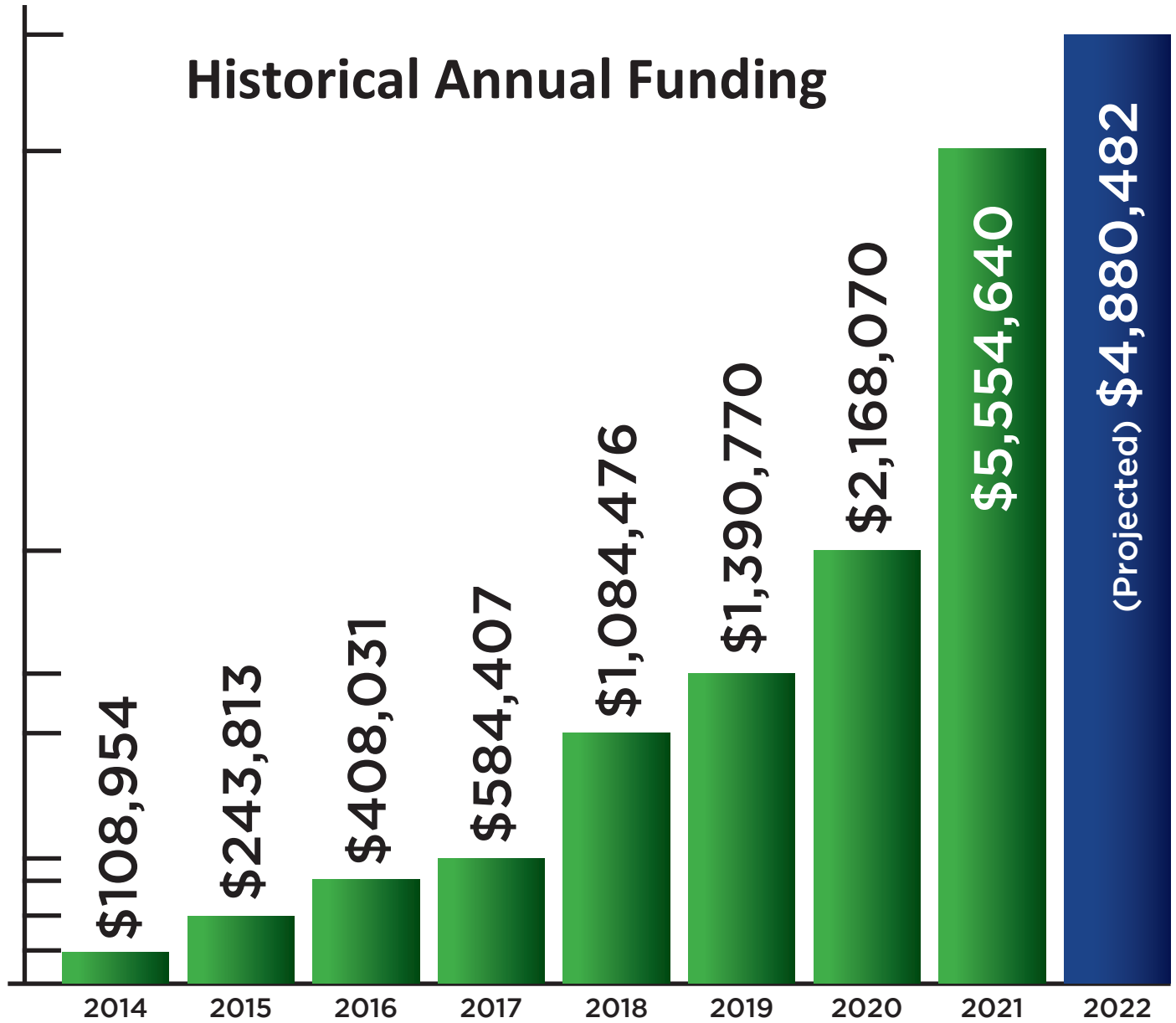




FINANCIAL STATEMENT

ASSETS	Total (\$)	INCOME	Without Donor Restrictions (\$)	With Donor Restrictions (\$)	Total (\$)
Current Assets:		Revenue and Other Support			
Cash & Cash Equivalents	\$ 1,762,853	Contributed Support:			
Promises to Give	216,879	Grant	\$ 2,604,041	\$ 1,705,682	\$ 4,309,723
Employee Retention Credit Receivable	300,295	Donations	692,670	-	692,670
Total Current Assets	2,280,027	Program Services	552,247	-	552,247
Property & Equipment		TOTAL REVENUE AND OTHER SUPPORT	\$ 3,848,958	\$ 1,705,682	\$ 5,554,640
Construction in Progress	45,000	Net assets released from restrictions	\$ 328,372	\$ (328,372)	\$ -
Building & Improvements	1,191,600				
Computers& Equipment	26,010	Expenses	Without Donor Restrictions (\$)	With Donor Restrictions (\$)	Total (\$)
Furniture & Fixtures	7,910	Program Services	\$ 3,598,238	\$ -	\$ 3,598,238
Vehicle	29,038	Supportive Services			
Accumulated Depreciation	(29,038)	General Administrative	359,152	-	359,152
Total Property & Equipment	1,270,520	TOTAL EXPENSES	\$ 3,957,390	\$ -	\$ 3,957,390
TOTAL ASSETS	\$ 3,550,547	TOTAL NET OPERATING INCOME	\$ 219,940	\$ 1,377,310	\$ 1,597,250
LIABILITIES AND NET ASSETS	Total(\$)	CHANGE IN NET ASSETS	\$ 219,940	\$ 1,377,310	\$ 1,597,250
Current Liabilities					
Accounts Payable	\$ 24,854	Net Assets at Beginning of Year	\$ 1,718,543	-	\$ 1,718,543
Deferred Revenue	-				
Total Current Liabilities	24,854	Net Assets at End of Year	\$ 1,938,483	\$ 1,377,310	\$ 3,315,793
Long-Term Liabilities					
Loan Payable	209,900				
Total Liabilities	234,754				
Net Assets					
Without Donor Restrictions	1,938,483				
With Donor Restrictions	1,377,310				
Total Net Assests	3,315,793				
TOTAL LIABILITIES AND NET ASSETS	\$ 3,550,547				

Historical Annual Funding



STEM NOLA SUPPORTERS

PLATINUM SPONSORS (\$2 Million+)



GOLD SPONSORS (1 Million+)



SILVER SPONSORS (\$500K+)



W.K.
KELLOGG
FOUNDATION®



BRONZE SPONSORS (\$100K+)



AT&T



AGBO FanDuel
 Akron Community Foundation
 Algiers Charter School
 Anthony Mackie
 Arise Charter Schools
 ARISE Mildred Osborne Charter School
 Athlos Academy of Jefferson Parish
 Audubon Charter School
 Baptist Community Ministries
 Baton Rouge Chapter of the Links, Incorporated
 Bayer Foundation
 Beverly Hawkins
 Binghamton University - Decker College of Nursing
 Blair Boutte
 Blue Cross Blue Shield of Louisiana Foundation
 Boys and Girls Club of Metro Louisiana
 BR Chapter of the Links
 Breakthrough Miami Inc
 Brown Foundation SupportSTEM
 CANO Esperanza Contractual Agreement
 CANO Foundation Prep
 CANO Lafayette Academy Lower School
 Capital Area United Way
 Capital One Impact Initiative
 Carlos Vital
 Cedric Richmond
 Charities Aid Foundation of America
 Chevron Gulf of Mexico Buisness Unit
 Christopher Marrero
 CITGO Petroleum Corporation
 City of New Orleans - NORD Commission
 Claudia Cope
 Community Foundation of North Louisiana
 Crescent City Links/Daughters Beyond Incarceration
 Damacia Lewis Singleton
 Daren Trammell
 Darryl Willis
 Darryl Willis
 Deborah Elam
 Dentons US LLP
 Dibia DREAM, Inc.
 Donna and John Fraiche

Dwana and Kenneth Frank
 Entergy Charitable Foundation
 ENVISION ON EXCELLENCE IN STEM
 Eric L Pinckney
 Ernst & Young - Americas
 Ezana Azene
 Fidelity Charitable Gift Fund
 Fitbit, Inc.
 Fore!Kids Foundation
 Fund II Foundation
 Garyville/Mt Airy Magnet School
 Grambling State University
 Greater New Orleans Development Foundation
 Gwen Brantley
 Hancock Whitney Opportunity Grant
 Hynes- UNO Charter School
 Introspect Youth Services, Inc
 J. Kevin and Jeanne Poorman
 James Grat
 Jefferson Parish Parks & Recreation Contractual Agreement
 Jefferson Parish Public Schools
 Jim Shelton
 Jimmie Davis
 Jocelyn Joseph and Dobbin Bookman
 Kinder Morgan Foundation
 Kingsley House-Educare New Orleans
 Lake Forest Charter School
 Louisiana Small Business Assistance Program
 Lycee Francais de la Nouvelle Orleans (LFNO)
 Mary McLeod Bethune Elementary School of Literature and Technology
 Matt Cheney
 Monroe City School Board
 Morgan & Co
 Moton Charter School
 National Basketball Players Associations
 Network For Good
 New Orleans City Council-Harrah's New Orleans Casino Community Support
 Grant Program
 New Orleans Ernest N Morial Convention Center
 New Orleans Pelicans
 Nicole & Gregory Washington
 Ochsner Healthcare System

Orleans Parish School Board (OPSB)
 Oschner Hospital
 Paul Samm
 Robert L. White
 Rod and Madeline West
 Saginaw S.T.E.M.
 SedexoMagic
 SER National
 Shell Oil Company
 Son Of A Saint Inc
 Sonja and Ike Spears
 Southern University at New Orleans
 Ssom Inc.
 St Helena Parish Public Schools
 St. Augustine Gifted Academy
 State of Louisiana 21st Century
 Summit Academy OLC
 Terence & Melissa Williams
 Terence Williams
 Tesson Foundation
 The Blackbaud Giving Fund
 The Boeing Company
 The Good Shepherd
 The Halliburton Foundation
 The Joe & Dorothy Dorsett Brown Foundation
 The Morgan Stanley Gift Fund
 The RosaMary Foundation
 The Samueli Foundation
 The Washington, D.C. Chapter of Jack and Jill of America, Incorporated.
 The Williamsons
 The Windsor Village Church Family
 Tiara & Reuben Bell
 TIES
 Tomorrow Foundation
 Tracey Royal Communications
 Tunica-Biloxi Education Program (TBEP)
 U.S. Department of Defense STEM (DODSTEM)
 United Way of Southeastern Louisiana
 University of Louisiana Lafayette Upward Bound Program
 University of Maryland Eastern Shore Upward Bound Program
 Vinennes University Upward Bound Program
 Warde & Chrislan Manuel

PROFESSIONAL VOLUNTEERS

PROFESSIONAL VOLUNTEERS

pour back into their community by engaging our K-12 grade scholars in hands-on Science, Technology, Engineering and Mathematics activities. Our professional volunteer community is comprised of both active and retired scientists, engineers, mathematicians, medical personnel and educators who serve as instructors and mentors. By being in their presence at our events, our scholars are afforded the opportunity to see themselves in STEM-Based careers.



Eskew Dumez Ripple⁺



CYBER.ORG



INTERNS & COLLEGES

COLLEGE INTERNS are a vital component of our community-based organization and make it possible to efficiently and successfully deliver quality programming to our scholars. They work diligently preparing materials and modules for all of our signature programs and events. More importantly, they work directly with out participating K-12 students helping them learn and understand core STEM principles while facilitating hands-on activities.





CONTACT US

www.stemnola.com

programs@stemnola.com



Interested in bringing other STEM NOLA programs
to your school or community?

Contact Programs@stemnola.com for information on community STEM events

Contact STEMinSchools@stemnola.com for information on school/teacher programs



GROWING FUTURE INNOVATORS, CREATORS, AND MAKERS FOR THE 21ST CENTURY

STEM NOLA

SCIENCE • TECHNOLOGY • ENGINEERING • MATH